

STAY AWAY!



STAY ALIVE

NEVER DO

*** NEVER GET CLOSER THAN 10 FEET TO AN OVERHEAD POWER LINE!**

* NEVER work at a site without checking for power lines. LOOK UP!

* NEVER, when using cranes/equipment near energized power lines of 50,000 volts (50 Kv) or more, get closer than 10 feet, and add ½ inch for each 1,000 volts over 50,000 volts.

* NEVER use cranes/equipment alone where it is difficult by visible means to maintain the desirable clearance.

* NEVER allow the observer to perform another job while helping the operator to maintain a safe clearance.

* NEVER forget that overhead power lines could be energized.

* NEVER take a chance without consulting first with the electric company to find out what voltage the lines carry.

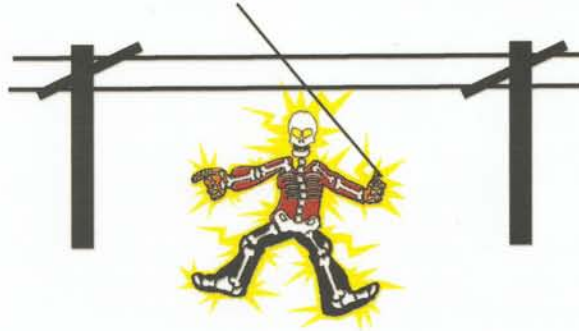
* NEVER work near power lines until you are certain that they have been de-energized and grounded or insulated by the electric company.

* NEVER work with ladders and tools if they have not been rated nonconductive.

THE SAFETY TIPS ON THIS CARD ARE NOT INTENDED TO BE ALL INCLUSIVE, THEY ARE SIMPLY A STARTING POINT TO HELP PREVENT ELECTROCUTIONS FROM OVERHEAD POWER LINES.

OCCUPATIONAL SAFETY AND HEALTH ADMINISTRATION (OSHA)
REGION IV
(6/03)

STAY AWAY!



STAY ALIVE

ALWAYS DO

*** ALWAYS KEEP A SAFE DISTANCE OF 10 FEET, OR MORE, BETWEEN YOU AND YOUR EQUIPMENT FROM THE POWER LINES.**

*ALWAYS survey the site for overhead power lines.

LOOK UP

* ALWAYS when using crane/equipment near energized power lines of 50,000 volts (50 Kv) or more, the minimum distance between the lines and any part of the crane must be of 10 feet plus ½ inch for each 1,000 volts over 50,000 volts.

* ALWAYS request an observer to assist you. where it is difficult for an operator to maintain the desired clearance by visible means.

* ALWAYS require that the only job of the observer is to help the operator to maintain the safe distance.

* ALWAYS treat overhead power lines as if they were energized.

*ALWAYS , when in doubt, call the electric company to find out what voltage is on the lines.

* ALWAYS ask the electric company to either de-energized and ground the lines or install insulation while you are working near them.

* ALWAYS make sure ladders and tools are nonconductive.

FOR FURTHER INFORMATION, PLEASE REFER
TO THE CODE OF FEDERAL REGULATIONS
(CFR), PART 1926.

YOU MAY ALSO CONTACT YOUR LOCAL
OSHA AREA OFFICE

Tucker, GA (770) 493-6644 Jacksonville, FL (904) 232-2895
Smyrna, GA (770) 984-8700 Frankfort, KY (502) 227-7024
Birmingham, Al (205) 731-1534 Mobile, AL (251) 661-6131
Columbia, SC (803) 765-5904 Nashville, TN (615) 781-5423
Ft. Lauderdale, FL (954) 424-0242 Raleigh, NC (919) 856-4770
Jackson, MS (601) 965-4606 Savannah, GA (912) 652-4393
Tampa, FL (813) 626-1177